



April 12, 2018

Thank you to everyone who took the time to participate in our survey! The City of Breckenridge and the Active Living Committee are teaming up to implement some of the improvements that you have requested! While some of these improvements will be incorporated into our 5-year capital improvement plan as budgeting allows, other ideas will be implemented this summer. Here are some of the things that we will be working on in the upcoming months:

1. Update our visionary trail maps and encourage pedestrian use of our publicly-owned levees which have recently been approved for walking/biking.
2. Install doggy waste stations along the new US Highway 75 trail and also near the major parks (Welles Memorial, Jefferson, Oxcart).
3. Make structural improvements to help with weed control and safety at Kids Corner Park (by Cenex).
4. Review/revise access to park bathrooms. (We try to leave bathrooms unlocked as much as possible if crime doesn't become an issue.)
5. Get quotes for resurfacing the tennis court(s) by the aquatic center and creating pickle ball courts on the same surface area.
6. Since we have had tremendous success in the past in working with individuals and service organizations to create or maintain parks, plant and water flowers, etc., we will again be seeking volunteer help to work on various beautification and park maintenance projects this summer. (Please call City Hall at 218-643-1431 if you or your organization are interested!)

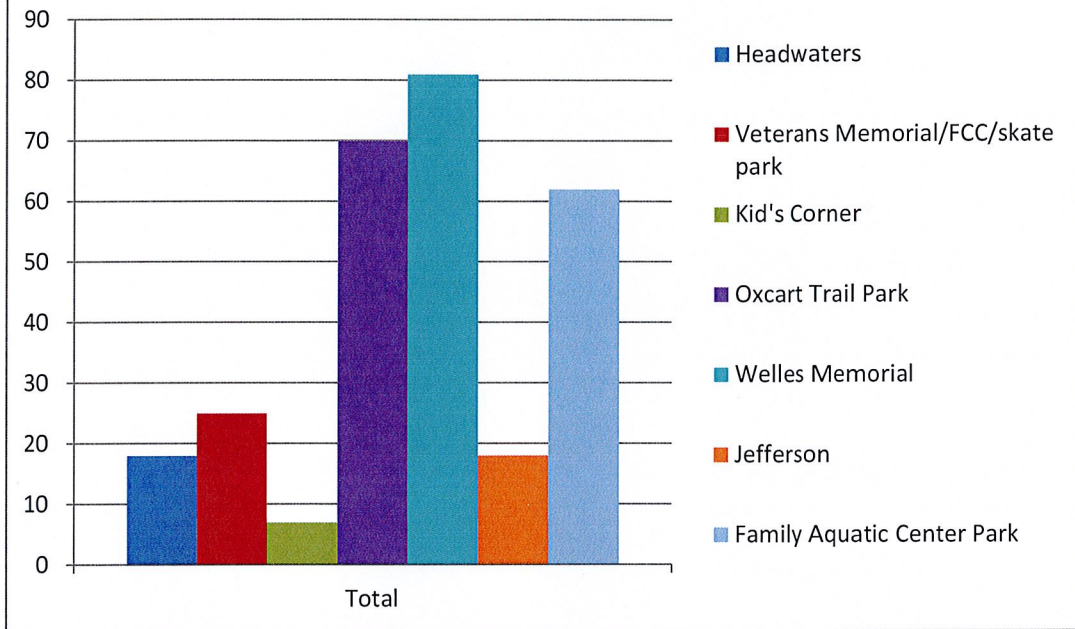
Thank you again to all who participated in this survey!

Thanks!

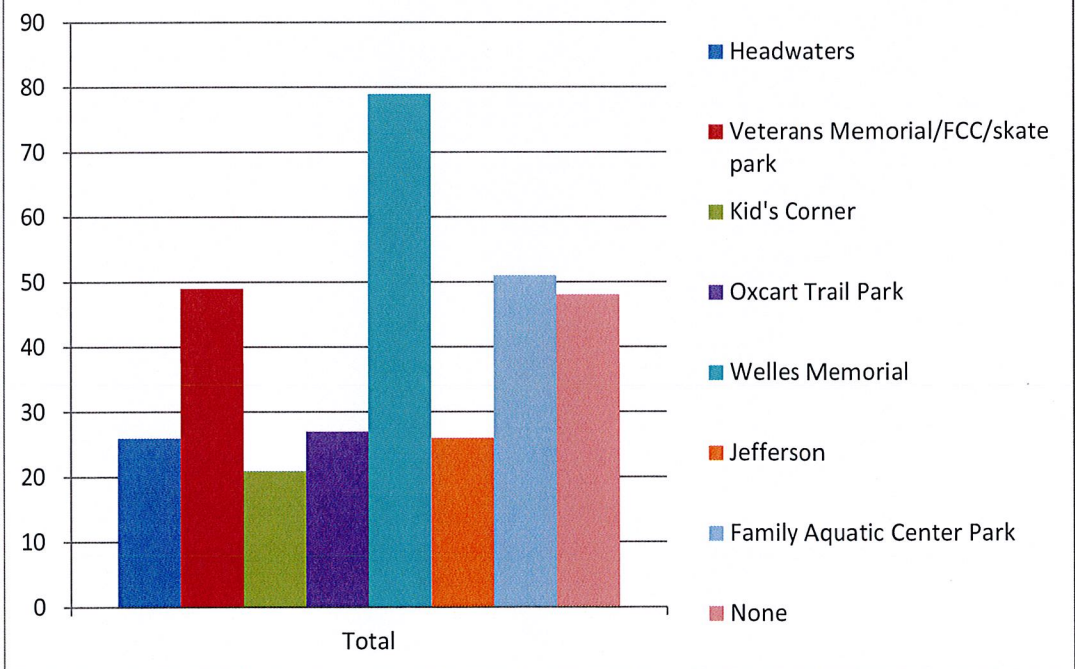
Rena Marthaler  
City Administrator  
Breckenridge, MN  
[rmarthaler@breckenridgemn.net](mailto:rmarthaler@breckenridgemn.net)

# Active Living Committee Survey for Recreation & Parks RESULTS

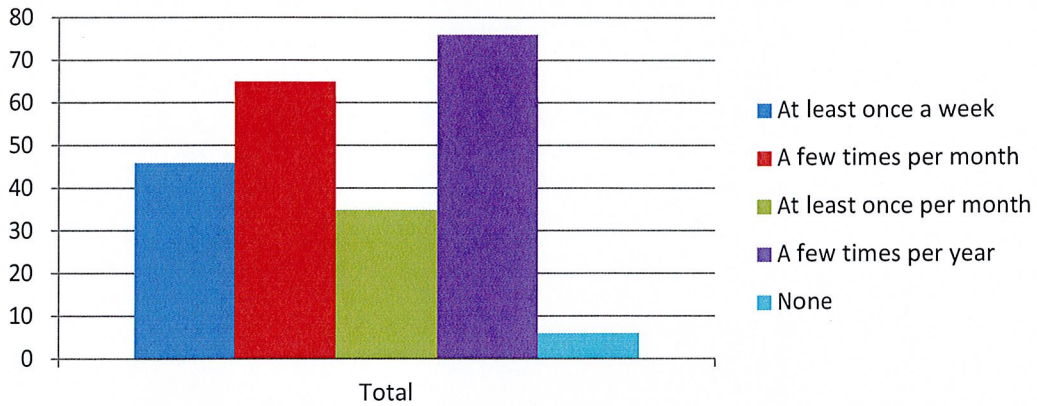
## 1. Which park do you visit most?



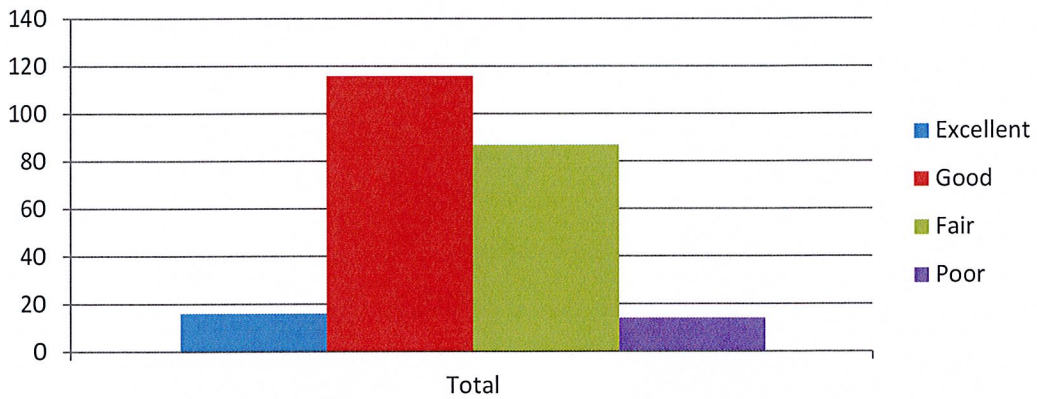
## 2. Which park would you visit more often if improvements were made?



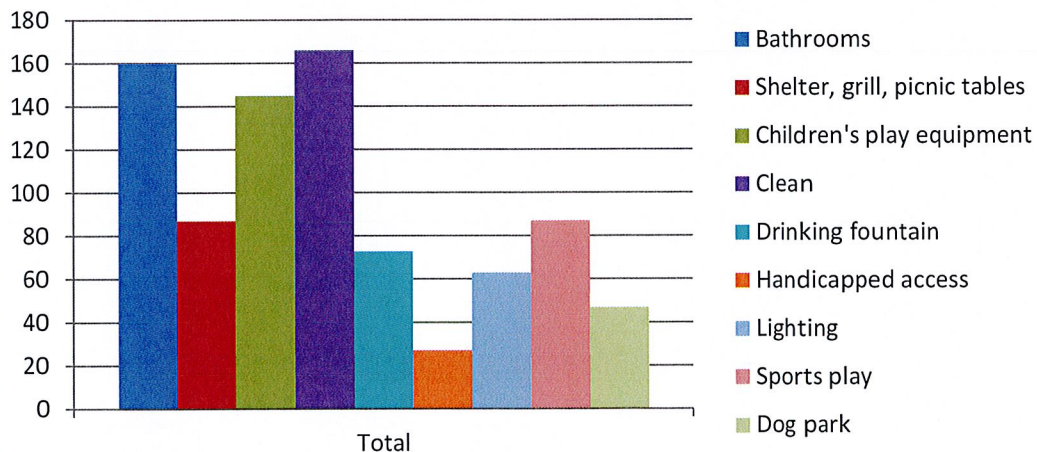
### 3. How often did you visit a park in the last 12 months?



### 4. How would you rate the condition of the parks?

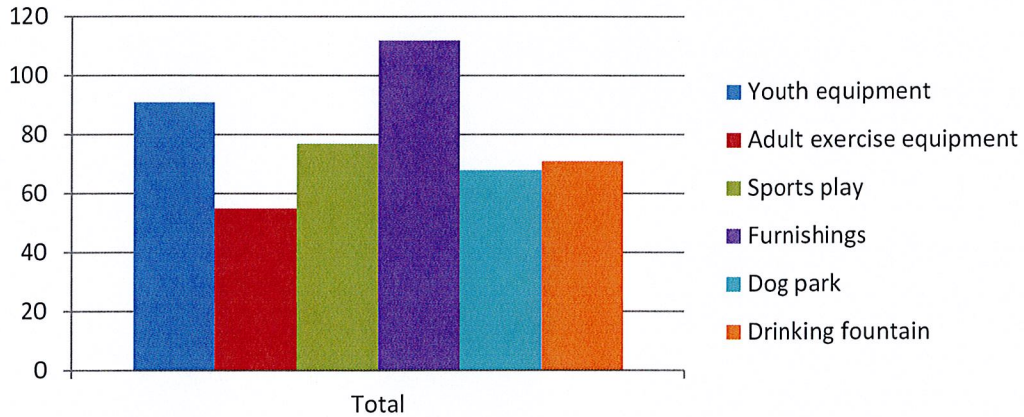


### 5. Which park amenities are most important to you?

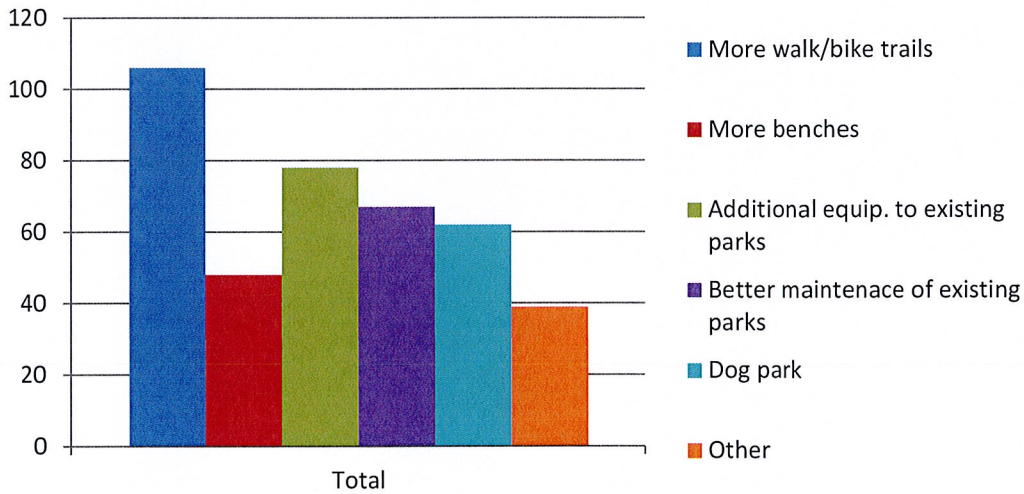




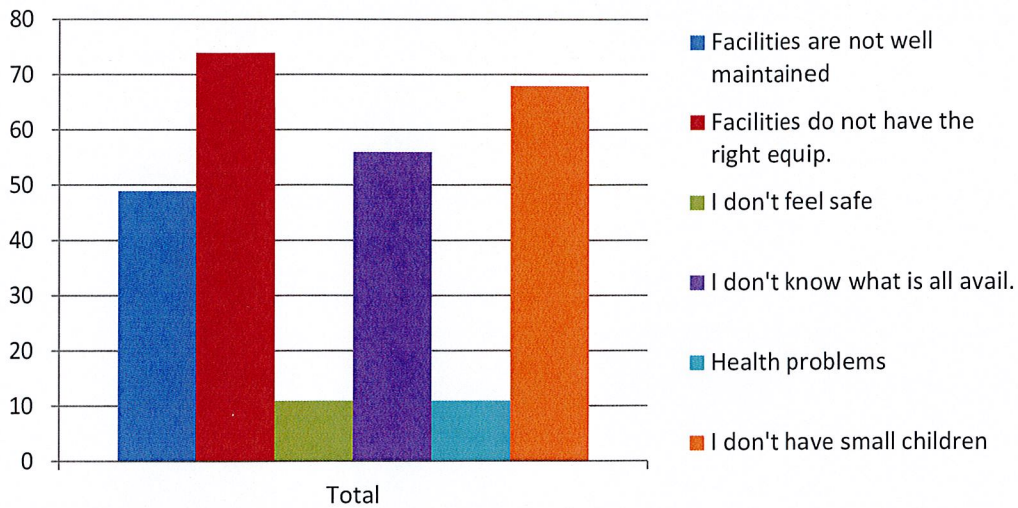
## 6. What additional equipment would you like to see?



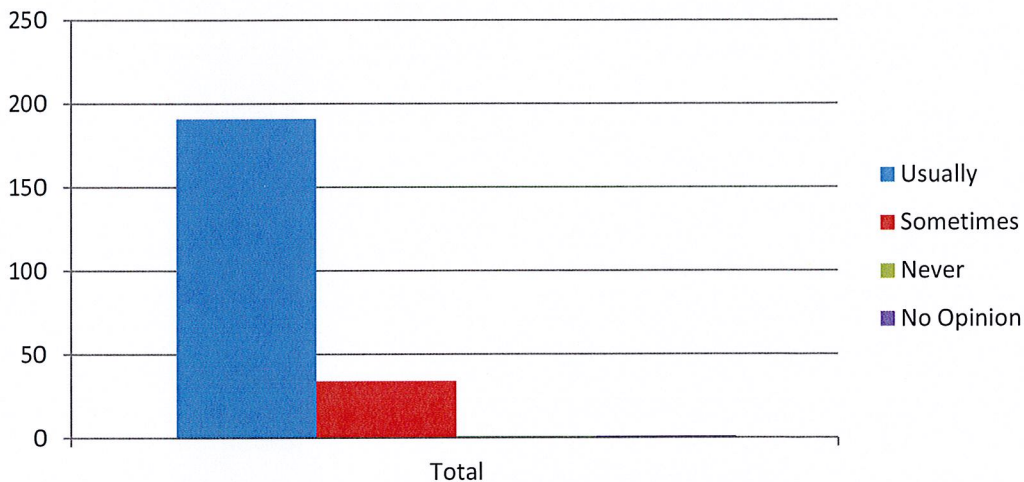
## 7. What other outdoor amenities would you like to see?



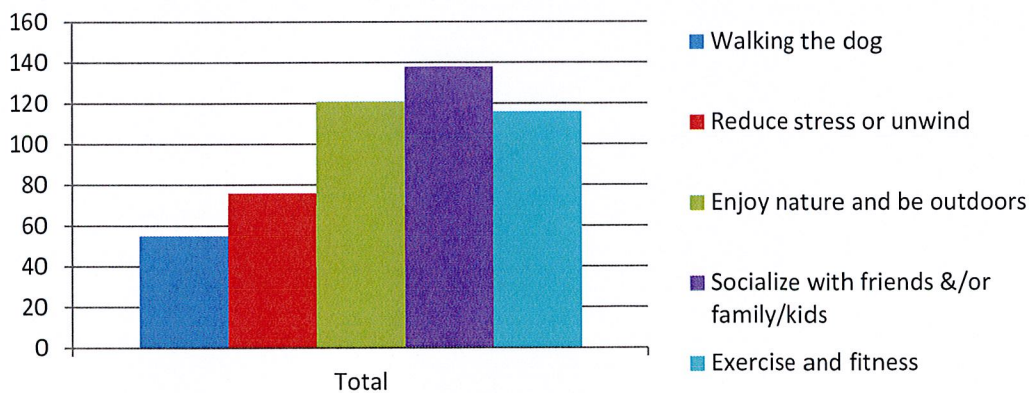
## 8. What prevents you from visiting parks in Breckenridge?



## 9. Do you feel safe in Breckenridge parks?



## 10. What motivates you to use parks or trails in Breckenridge?



### Comments

1	Nothing listed on here for fishing or hiking or mountain biking
2	By question #9: Welles is sketchy
3	Park by the Breck pool really need a lot of loving care and up date
4	Need a water fountain for the disc golf, also some benches would be nice as well.
5	We are over 80, used parks more when we were younger.
6	I feel we have adequate parks and trails for the amount of residents Breck has. We have enough to maintain. Thanks for all your efforts.
7	The play area in Welles Park is in poor condition. I put duct tape and padding on the rusted equipment last year so kids wouldn't get cut at the fair.
8	Aquatic Center park is in need of more updated playground equipment. A beautiful pool with a poor playground.
9	Comment on #7: Trees trimmed so you can walk on sidewalks.
10	Leave the Wilkin Co. Fair Grounds where they are now.
11	By question #7: Why not use the dike system as bike trail like Wahpeton does. Bike trails needed
12	More access to restrooms, dog park, benches- more sitting areas at all parks
13	By question #2: Family Aquatic Center "Lower Prices"
14	There are two signs at the east bridge entrance to Welles. The one with bigger letters says park closed 11:00-5:30. The sign with smaller letter under the first one says park closed 10L30-5. I'd like to use the park at 5:00! But have been stopped by a police officer telling me I have to wait till 5:30.
15	More for teens to do
16	Thank you for doing this survey!
17	By question #2: Jefferson Park "needs drainage badly!"
18	By question #4: Kids Corner gets over run with weeds & some swings were broken last year. Family Aquatic can have too many bees in the rocks. Jefferson is flooded half the time.
19	By question #5: Tree Shade
20	By question #4: Rate Poor- Kids Corner the rest of the parks seem to get the majority of the maintenance - where Kids Corner is very neglected
21	By question #4: Rate Excellent- OxCart Trail      Rate Poor- Kids Corner- very poor
22	By question #5: Weeds get out of hand in the summer- not well maintained (Kids Corner)
23	By question #7: <u>More walk/bike trails</u> - hell no- What a waste of money! - Especially the walk path to the hospital. <u>Additional equipment at existing parks</u> - Kids Corner
24	There are many young kids on the "south side" Please don't forget about us- Thank you
25	By question #7: Better security in Welles Park, more police patrols
26	Tar or pave the top of the dike for walking, running, biking like Wahp did
27	Swimming pool park play area is so old. Would be nice to see some money being spent on it.

28	By question #7: More walk/bike trails- even just fixing sidewalks would help. Half of them are unusable for strollers, so moms end up in the street with their babies. Not Fun! Sidewalks are a huge issue to getting around & accessing existing amenities like parks. That & railroad crossings. Those are awful for pedestrians. The east RR crossing has no place for pedestrians, so you are merging with traffic (many of whom are texting....) with your babies . Dangerous! West RR crossing is very bumpy & broken.
29	By question #8: Facilities are not well maintained- most are fine- just the above issues are concerns. Also, accessing parks can be an issue. To get to Jefferson- the sidewalk ends & you go through the gravel road. Which was fine until they dumped an inch+ last fall & it was bumpy. There's zero way to get to Kids Corner safely, esp. from the north. You have to go through Cenex lot- & trucks/semis & strollers aren't a great mix. And there is no break in the curb. So, you have to hop the curb with a stroller. Which is fine- but less able people might not be able to. I imagine most places are impossible for even mildly less able people because the town is not very handicap accessible in general.
30	Outstanding job on the Frisbee golf project! Kudos
31	Why cant we allow people to walk the tops of the dike, people walking wont hurt them.
32	Yes the baseball diamonds are there for the kids but the community is aging and having a place for others is needed. The basics are there in Welles but need more work the 40 plus crowd to pleasantly walk, exercise, and relax.
33	Love the walking path to the hospital. We need to add some benches and dog receptacles.
34	Indoor Hockey and walking track in the winter time.
35	This is Minnesota. We need an indoor hockey rink. A city like Breckenridge could host several weekend long tournaments throughout the season. There are so many youth in the hockey program and figure skating program, we simply need more ice. An indoor facility in Breckenridge would be the best addition to our parks. An arena would also generate revenue to help support its cost.
36	Skate park is too close to sidewalk. Pedestrians have to walk on the street to get by. Find a possible solutions to curb the rude behavior exhibited by some of the kids and young adults. A lot of swearing and fighting can be heard through out the neighborhood.
37	We need a community center with indoor pool, waterslide, indoor soccer facility, or sports bubble type, and indoor ice surface. There is nothing to do in the winter.
38	If we could ever get a bike path all along the river it would be a HUGE asset to us as a city.
39	It is hard to take small children to some of the parks when older kids are talking and behaving inappropriately.
40	Would like to see an indoor skating rink also.
41	It would be great benefit to the community to have another indoor ice arena being the one in Wahpeton is extremely busy.

42	<p>There is talk of a new Breck Rec Center which is mainly comprised of 2 basketball courts. Basketball is a great game but there are already 5 plus courts available between the three schools in Breckenridge. I would imagine Wahpeton has a similar number of courts available as well. Our twin town community has only one sheet of indoor ice and hockey is a great sport with many of our local youth already participating in hockey. Perhaps the park dept., city of Breckenridge, along with the BRECK REC center, and other local leaders should consider a hockey arena. It could be a community based facility with walking tracks etc. We already have 5 plus basketball courts I don't think we need 7 courts with our current enrollment outlook. A new facility with hockey and other community amenities makes good sense for your fair city of Breckenridge. The goal is to build something that increases the standard of living for our residents and brings visitors to our community who are not already coming to our community. Therefore a facility with hockey included which we currently do not have makes good sense.</p>
43	<p>I would really like to see Breckenridge get an indoor ice rink. Hockey and skating are growing in our community and it'd be nice to have a nice facility for our youth.</p>
44	<p>Breckenridge provides a great assortment of outdoor parks and basketball courts. It would be really nice to see the city help invest in an indoor hockey arena. The hockey program is growing in Breck/Wahp and it would be nice to see some support from the MN side. There is one sheet of indoor ice and 143 youth hockey players, 20 high school hockey players and 35 figure skaters... there is a huge need for more indoor ice. With close to 300 kids needing ice time, it is nearly impossible to obtain adequate proactive time without having 9-12 year olds practicing until after 9pm or 13-15 year olds practicing until after 10pm or as early as 6am. We want our youth to be active but when lack of sleep, due to late or early proactive times, starts to affect grades, you're going to see a decline in active participants.</p>
45	<p>The folks working on the BRECC need to recognize there is much more opportunity that exists off their current plan or a plan that has not engaged the community as whole (including Wahpeton). There is so many efficiencies that could be gained by engaging all user groups that could reflect in more favorable prices and experiences for our community members. Also location is key for the ability to grow the facility, and the location has to be where it can impact community and/or economic development the most. Current location selection would not allow for either.</p>
46	<p>The BRECC facility should be more inclusive of all possible user groups. Hockey and Figure skating share one sheet of ice far as many kids that are playing basketball. How about the Gymnastics program also. Make the facility a true community center not a glorified basketball court building.</p>
47	<p>The breck pond is not well maintained during the winter. Several times while driving by the lights are off and the warming house is closed either on a warm evening and even the weekends. I grew up in Breckenridge and it use to be open all the time and much bigger. We definitely could use another sheet of ice (indoor) and utilize this in our area.</p>
48	<p>Please put children's play equipment at the community center.</p>
49	<p>I took my nephew to a park that still had the equipment from when I was young... that's over 20 years ago.</p>
50	<p>Need more bike/walking paths away from people running thru stop signs.</p>
51	<p>Thanks for trying to improve our city &amp; it's parks/rec offerings!</p>



52	I know vandalism is a problem at our parks, but it would be nice if the restrooms could be available for use. Cannot emphasize this enough.... Dog parks must be separate from human parks for cleanliness and safety of our youth and adults.
53	This is not a very good survey.
54	A dog park would be a great addition in Breckenridge.
55	Please reconsider use of the dikes to be just as Wahpeton (and other major cities). The bike trail to the hospital just does not have that nature aspect- wind/sun barriers. Thank you.
56	The tennis courts by the aquatic center are in really poor condition. They are close to my home and my family really enjoys playing tennis. But, due to the poor condition of the facility we have to go to Wahpeton to play.
57	A caterer's kitchen/kitchenette at the community center would be GREAT
58	A park on the northeast side of town would be great. Or update the "park" at the aquatic center.
59	A place to play badminton would also be a welcome addition as well as more walk/bike trails. Maybe a bike trail to Lake Breckenridge as I'm concerned about riding on the highway.
60	If serious about enclosed pool (east of High school?) do it right. Separate lanes for serious lap-swimmers, sauna and or steam room (big draw in the winter), no basketball (kids not adults play basketball, they have the high school for that. ) aerobics/weight room, elliptical, treadmills, etc. Hwy 75 walk path bad, too much traffic, too many crossings (few people at Hospital can/will use it). Should have been in a more serene setting (11th street). Thanks for my input, yeah I know. I'm welcome.
61	Need more adult orientated equipment for exercise.
62	Plus fix up downtown. Looks run down.
63	I love all the various parks we have in our town. I feel each park is geared for a age group and this is important. I love the bike paths and can't wait for spring to try out the new one.
64	I've got limited access to most areas of town right now. My child is starting her tween stage of maturity... I'd love to see age appropriate activities she can do by herself as well with playmates. Thanks
65	It would be nice to have something more like Chahinkapa in Wahpeton. Better and bigger equipment, better maintained and place you can grill, play, relax and hang out with family for hours. Including having shelter for get togethers.
66	Very frustrating when OxCart bathrooms are locked. We never know when, thus preventing us from visiting. I know in the past, vandalism has been a problem at night, and the city would leave the bathrooms locked 24-7. Those years, we simply could not walk or bike to OxCart because if a child needed a restroom, we would need to find one quickly.
67	Upgrading the park and equipment at the family aquatic center should be a priority.

68	Every street should have a sidewalks on BOTH sides of the road. Please! This should be a priority!
69	The parks are well maintained. I'd like to see some shaded benches at the pool park in Breck.
70	Bathroom access at OxCart needs to be addresses.
71	Would be great if the dike system could be paved
72	Thanks for being willing to listen to your city residents. We enjoy the new walking/bike path heading North. We would love to see the tennis courts at Pool Park being fixed. Could also use these for the ever-popular pickle ball with different marking. THANKS!
73	
74	